



NEWS MAGAZINE

No 45 Autumn/Winter 2013

ISSN 0960 - 1244



**RAMSBOTTOM HERITAGE SOCIETY, C/O RAMSBOTTOM LIBRARY,
CARR STREET, RAMSBOTTOM, BURY, BL0 9AE
Contact number: 01706 28 1998**

The objects of the society shall be:-

- a) To advance education of the public by creating an awareness of and interest in the study of the history and heritage of Ramsbottom (as defined by the boundaries of the pre-1974 Ramsbottom Urban District Council).
- b) To locate relevant documents, records and artefacts. To retain, catalogue and/or copy them where possible, and to operate an information centre.
- c) To seek to protect the heritage of Ramsbottom

PROGRAMME:

2013

- November 20 Tony Hodbod - *Imperial Policeman – the Colonial Career of the East Lancashire Regiment 1881 – 1958* (Illustrated)
- December 11 **Christmas Social Evening**

2014

- January 15 Alan McEwen - *Powering the Pennines – Waterwheel Powered Industries* (Illustrated)
- February 19 George Eccleston – *Mary Queen of Scots part 2 – from Luxury to Disaster* (Illustrated)
- March 19 **Photographic Competition**
Bernard Wilson - *Ramsbottom's Digital Magic* (Illustrated)
- April 16 Dr Paul Hindle – *Off the Beaten Track – Unusual Types of Roads in Britain* (Illustrated) -
- May 21 **Annual General Meeting and Members' Night**

**Unless otherwise stated, meetings are held at Ramsbottom Civic Hall,
Market Place, Ramsbottom, commencing at 7.30pm.**

Entry by donation, please.

The Editors welcome articles for inclusion in the News Magazine. These may be handwritten, typed or on disc (in "Word") and sent to the Heritage Society. Please include your full address and a contact telephone number.

Ramsbottom Heritage Society News Magazine No 45

Autumn 2013

CONTENTS

RAMSBOTTOM MISCELLANEA – NEWS ITEMS	page 2
Chairman’s Report	<i>Kate Slingsby</i> page 3
The Bridge Family	page 4
Ramsbottom Cottage Hospital Part 2	page 6
Church Fields Evidence Questionnaire, 1991-2011	page 10
Historical evidence of the Commons status of Church Fields, 1806	<i>Andrew Todd</i> page 12
Reverend Richard Chew and his Ramsbottom Roots	page 13
Ramsbottom War News	page 18
Ramsbottom Heritage Society’s Photographic Competition	page 19
Tony Murphy	<i>Linda de Ruijter</i> page 19
Obituaries – Tony Murphy	page 20

Front cover - St Andrew’s Church, Ramsbottom. We thank the Church for giving us permission to use this drawing from their Festival of Flowers programme 1986

Website - www.ramsbottomheritage.org.uk

Email via website

RAMSBOTTOM MISCELLANEA – NEWS ITEMS

Let's move to Ramsbottom, Lancashire – it's artsy but not hoity-toity

Thanks to Society member Mrs Mary Newborne we have a copy of a full-page newspaper article with this title. She found it in *The Guardian Weekend* (1st June 2013). As well as dispensing basic information and advice about Ramsbottom properties, the journalist apparently intended to start a debate about the merits of living in Ramsbottom. He devotes 4½ column inches to Ramsbottom's good points: festivals, good local theatre, Black Pudding World Championships, *Elbow* (the band who played their first gig at Stubbins), the beautiful cricket ground and our town as a "foodie destination". He also mentions its "solid souls who wouldn't want to live anywhere else" and the "appealing battiness about the place" (at Easter with the townspeople climbing Holcombe Hill to roll eggs). His case against – only sixteen words about the rain!

Wanted: evacuee stories from Lancashire

Gillian Mawson, whose new book *The Forgotten Evacuees of the Second World War* was introduced in our News Magazine no 44, is starting work on another book about British evacuation during World War II. She is looking for evacuee stories from Lancashire and would like to hear from people who were either evacuees themselves or whose families took in evacuees. If you can help you can let her know on gillianmawson@btinternet.com or contact the Society.

The Holcombe Moor Heritage Group report an important and exciting find. In July the County Archaeologist visited the site to inspect the group's recent discovery of a 'smelting hearth', a remnant of iron making. His opinion is that it is indeed a medieval smelting hearth dating from the 15th or more probably the 14th century. To read more, you can visit their website on www.holcombemoor.org.

St Andrew's Church, Bolton Street, was extensively damaged during a thunderstorm shortly after 7am on 23rd July 2013, the incident being widely reported in the media. One of the four large pinnacles on the tower was destroyed by a bolt of lightning and large lumps of stone plummeted through the main roof with debris crashing down, spreading through the interior of the building and even reaching the adjacent school playground. No one was hurt and scaffolding and sheeting is now in place over the huge hole in the roof. Originally built by William Grant in 1834 and the oldest in Ramsbottom, the Grade II listed St Andrew's Church is now closed for the foreseeable future. The Society's best wishes go to the church people as they work on the many ensuing problems.

Church Field (next to St Andrew's Church, Bolton Street)

Please use the enclosed questionnaire to help the Society to protect Church Field from any future development. There is still time before the public enquiry early in 2014. (More information on pages 10 and 11.) If you've completed a questionnaire already we'd like you to pass it on to be filled in by someone else. Finished questionnaires may be sent to the Society's address or left with local shopkeepers, including Stuart Rothwell at The Vineyard, Square Street, Ramsbottom. Thank you.

The Society's website www.ramsbottomheritage.org.uk has recently been updated again. As described in our last issue, it contains an impressive amount of interesting local material, including photographs, as well as news about Society activities. Our readers are encouraged to have a regular browse.

CHAIRMAN'S REPORT

You all seem to have been very busy since the last magazine and between you have been carrying forward the work of Ramsbottom Heritage Society..

The very sad death of Tony Murphy at the beginning of August, left many gaps as, even after his retirement as Chair, he continued to fulfil four or five roles. I owe him a personal debt of gratitude, as I would have found my first two years as Chair very difficult without him. Several members of the Society have kindly stepped forward to help, although we have not yet found anyone to look after the bookstall permanently. We would really grateful if an individual or a couple would consider taking on. However all the activities of the Society have continued this year without a hitch.

The *Ramsbottom War News* was again a great success, selling well over 1,000 copies. This year however, the team producing the paper suggested that the proceeds should go to the War Memorial Wall to be built by the British Legion outside St Paul's Church. Unlike the existing memorial, the wall will have the names of all those local servicemen who died serving their country.

The good weather back in the summer, helped the success of the guided walks which are now under new leadership, although, unfortunately in September it was a complete washout for the final walk and it had to be cancelled.

The Conservation group continues to try to protect our heritage. Along with other residents, we objected to very unsuitable plans to develop the bowling green at the back of the Civic Hall. Whilst the owner has been prosecuted for cutting down protected trees without permission, the fate of this space is still unknown. At the time of writing no plans have been submitted for the site of the Paper Mill by

the Irwell bridge, but it is understood that the council wishes to retain the chimney and other Victorian buildings as part as our heritage.

A new venture for the society this autumn has been a series of four Local History Research Workshops, to enable people study the history of Ramsbottom and its people. Seventeen people enrolled, including eleven who were entirely new to the society. The sessions, which were very interesting and worthwhile, were run by seven members of the society, along with current and previous members of Ramsbottom Library staff and the North West Sound Archive team. We are expecting that various projects will arise out of the workshops, although these are not finalised at the time of writing. I am looking forward to telling you about them in next Spring's magazine.

Until then, may I thank you again for all you do for the Society

Very best wishes Kate Slingsby

THE BRIDGE FAMILY

The following article is based on family information supplied by Hilary Peace from Ramsbottom - a great, great, great granddaughter of the John Bridge who was born in 1791, son of Henry and Mary Bridge. Details about these members of the Bridge family are included in the article and we strongly recommend the website of the Holcombe Moor Heritage Group as a source of historical and archaeological information about the farming area around the homes of the families mentioned and others.

The Bridges, the Holts and the Kays, local families whose ancestors have lived in Lancashire for hundreds of years, may originally have been related and of Flemish origin, arriving in England during the 1370s. There was already a long tradition at that time of Flemish people migrating to Britain. In 1106 large tracts of Flanders had been flooded and numbers of its people formed various colonies across Britain. Groups of Flemings were pretty well spread out through England, Wales and Scotland by the end of the thirteenth century and from then onwards they continued to settle. After the Middle Ages, when the Flemish towns had built up very successful industries and commerce, there had been a gradual infiltration by the French. The French kings continued to exert feudal power over the Count of Flanders and the people until the 16th century and there were French invasions. The Flemish towns' ruling classes became increasingly proud and exclusive in their direction of urban affairs until the mass of weavers, fullers, dyers and all the other skilled craftsmen who paid urban taxes had no say in how they were spent. In the

second half of the 13th century there were conflicts in Bruges, Ypres, Douai and Tournai.

The struggle against the control of the King of France led to his annexing Flanders and this was followed by the Battle of the Golden Spurs. It took place near Courtrai (Kortrijk) on 17th May 1302, when the French knights were vanquished by Flemish peasants and urban militias, but the fight for economic independence continued. When the Bridges, Holts and Kays arrived here in the 14th century their Flemish homeland was in turmoil: from 1305 after Kortrijk the peace terms imposed by France included crushing fines and stricter controls, towns struggled between themselves for predominance and the numerous Flemish weavers strove to gain political power - often extremely violently. Whenever a recession affected their earnings, exasperated bands of weavers had a nasty habit of roaming about the countryside, breaking up the looms which they thought had caused it.

Around 1337 Flemish weavers are recorded as arriving in Bolton to work in the textile industry (based at that time on farmers working on handlooms in their homes), and they also helped to develop the cottage woollen industry around Blackburn. Records show that Geoffrey del Brygge was a tenant/freeholder in the Alden area in the 1440s. At that time Alden was part of Tottington Higher End within the Salford hundred, although it became part of Blackburnshire hundred at one point with the creation of local hunting forests for the local nobility. Presumably, the Bridge (Brygge, Brigge, Bryg) family who were yeoman farmers, spread within the Tottington Higher End area, moving southwards towards the Bury area over time.

Many members of the local Bridge family later lived in the Hawkshaw area in the early 1600s at Spenleach Farm, Croichhey and other farmsteads. (The present Croich Hey was built in 1904 by Fred Whowell, taking its name from the much older house on the hillside.) Until industry came to the area the whole of the present Tottington, Greenmount area was little more than a collection of farms and hamlets scattered around the hillsides and valley bottoms. The will of yeoman Richard Bridge (d1620) was made in 1619 and we know that he had married Margaret Bannister. His son Henry (b 1603), another yeoman, lived at Spenleach Farm and the family lived there until 1792.

Henry Bridge's son Thomas (1630 – 81) was the husband of Ann Wood and their son Richard (b 1664) married Sarah Smith. Richard and his wife Sarah were Presbyterians. Their son, another Henry, was the father of John (1721 – 1784) who married Mary Hamer. John and Mary's son was also christened Henry (b 1753). During this Henry's lifetime he married Mary Fell and they became innkeepers, breaking for the first time the family chain of yeomen (i.e. men holding

and cultivating small landed estates). Their descendants were corndealers and veterinary practitioners, indeed Henry and Mary's grandson John (b 1819) became a veterinary surgeon and lived at Walshaw Hall and later at Brandlesholme Hall. John's brother Roger (b 1826) was also a vet and bought Philip's Park Hall where he lived for five years. Since their time, the family have been scattered to the four winds.

OTHER SOURCES

Patricia Carson , *The Fair Face of Flanders*, 1969

An article by Jan Barnes *A Lancashire Family, the Bridges of Hawkshaw Lane* can be found in *Hawkshaw Gala Review Ninety (1990)*. It includes a family tree from the early 1700s and illustrations by John B Taylor and can be read at Ramsbottom Library.

RAMSBOTTOM COTTAGE HOSPITAL PART 2

The Stained Glass Windows

At the Bury Council planning committee meeting in the Spring of 2013, when permission was granted for the demolition of the hospital, it was agreed that the window panels over the staircase and another small stained glass window would eventually be donated to the Society along with the hospital's weather vane and foundation stone.

We are grateful to Society member Pam Woosey for the photographs which show the stained glass windows about a year before the hospital's 2008 closure. The Aitken crest in the centre of the six panel window above the staircase commemorates the local mill owning family who founded the hospital. On either side are panels with the year AD1898 when its foundation stone was laid by Mrs May Aitken.

The hospital also had an internal window featuring an image of Queen Victoria to represent her Diamond Jubilee, which had also been commemorated in the original name, *The Aitken Memorial and Jubilee Cottage Hospital*. This window seems to have been removed by the time Society members visited the building soon after it closed. Another internal window matching the size and position of the Queen Victoria window had been noticed by members around 2004-5. It had a scene of Holcombe Hill and the Peel Monument but unfortunately, it was not in place when Pam took her pictures so there is no photographic record of it.

Irwell Vale's Connection with Ramsbottom Cottage Hospital

Irwell Vale dates back to the 1830s when it was a completely new village with two rows of workers' houses next to Irwell Vale Mill, which was also new at that time.



Eventually the people of Ramsbottom and the surrounding area were to benefit greatly from the wealth created during the long association between the mill and the Aitkens when they founded Ramsbottom Cottage Hospital.

In 1837 Thomas Aitken from Chatterton had taken over the mill following the bankruptcy of the mill's first tenant, Henry Kilshaw. In 1875 control of the business (Thomas Aitken & Son) passed to Thomas Aitken's son, also Thomas. It was after he had recovered from a serious illness that his wife, Mrs May Aitken*, decided to build and furnish the hospital. In 1905 Thomas Aitken bought not only Irwell Vale Mill but also most of the village.

Thomas Aitken died in 1911 and, following Mrs Aitken's death in 1915, the business passed to her cousin Margaret Gray. Miss Gray was already a wealthy woman. As well as spending money on improving the conditions of the workers, she gave large sums to their local cottage hospital at Ramsbottom and succeeded the Aitkens as its president.

A fete marking the 180th birthday of the village of Irwell Vale was held on Saturday 7th September 2013. As well as a variety of stalls, face-painting and a barbecue, the event featured scarecrow and dog agility contests and a history corner. It was reported that most of the community came out to help and enjoy the fun and that £1500 was raised for "our little tourist spot".



References:

Clyde Tweedale: The Aitken Family: Millowners and Philanthropists Ramsbottom Heritage Society Magazine, Number 15, Autumn 1997

John Simpson , *A History of Edenfield and District* published by the Edenfield Local History Society in 2009 pages 92 – 94

Rossendale Free Press 13th September 2013

(Details of the dedication and generosity of Mrs Aitken and her husband Mr Thomas Aitken were included in an article on Ramsbottom Cottage Hospital's history in News Magazine number 44, still on sale at Ramsbottom Library.)*

Opposite: A recent donation to the Society included copies of Ramsbottom Cottage Hospital's Annual Reports. We have reproduced a table from one of the reports which reveals figures about cases treated from 1900 to 1947.

COMPARATIVE FIGURES OF HOSPITAL WORK.									
Year	HOSPITAL.				DISTRICT.				X-Ray
	In-Patients	Operations	Out-Patients	Visits	Cases	Visits		Patho-logical	
1900	... 57	16	nil	nil	... 160	2819			
1901	... 71	10	"	"	... 146	3115			
1902	... 87	17	"	"	... 138	2903			
1903	... 79	16	16	*	... 119	3216			
1904	... 124	48	27	299	... 122	3322			
1905	... 120	57	32	302	... 145	3480			
1906	... 122	54	31	332	... 120	2922			
1907	... 133	62	35	427	... 106	3301			
1908	... 145	73	36	757	... 144	4197			
1909	... 115	59	30	446	... 154	3954			
1910	... 135	79	28	541	... 150	3870			
1911	... 145	74	33	474	... 120	3472			
1912	... 194	120	36	757	... 135	4128			
1913	... 191	121	31	718	... 122	2927			
1914	... 174	114	51	847	... 133	3149			
1915	... 151	82	81	1642	... 72	2486			
1916	... 130	82	152	2432	... 83	3650			
1917	... 146	*	137	2057	... 89	3119			
1918	... 134	94	142	2111	... 95	2400			
1919	... 152	110	187	2897	... 114	2660			
1920	... 114	54	266	4218	... 110	2960			
1921	... 112	67	247	3647	... 84	2768			
1922	... 107	57	296	3578	... 136	3054			
1923	... 108	45	313	3528	... 149	3106			
1924	... 127	74	395	4729	... 181	3929			
1925	... 167	100	490	6864	... 176	2659			
1926	... 197	119	336	6050	... 196	3446			
1927	... 200	146	575	7588	... 156	3420			
1928	... 239	187	689	5680	... 155	3529			
1929	... 214	159	693	5285	... 169	3035			
1930	... 198	127	546	4150	... 154	3099			
1931	... 177	104	568	5570	... 155	2341			
1932	... 149	91	756	5289	... 182	2802	100	29	
1933	... 189	115	733	4825	... 160	2655	153	31	
1934	... 190	120	753	4207	... 135	2703	153	50	
1935	... 195	129	824	3034	... 196	3075	188	55	
1936	... 184	114	725	3481	... 162	2636	151	61	
1937	... 62	44	652	3524	... 139	3002	102	49	
1938	... 213	127	730	3044	... 161	3364	156	69	
1939	... 202	122	765	3474	... 155	2862	162	55	
1940	... 174	104	664	2678	... 165	2562	157	28	
1941	... 189	119	732	2783	... 141	2475	157	32	
1942	... 199	137	774	2492	... 141	2179	144	44	
1943	... 200	151	678	2579	... 158	1815	123	34	
1944	... 254	154	716	2429	... 134	1612	168	44	
1945	... 207	137	714	2719	... 152	1964	163	74	
1946	... 219	155	970	3163	... 155	1759	209	72	
1947	... 197	157	1035	3650	... 166	2017	233	31	

* Not recorded.

|| Northern District included, 1922.

Church Fields Evidence Questionnaire, 1991-2011

Public enquiry

Ramsbottom Heritage Society has applied for the part of Church Fields nearest Bolton St to become a Town/Village Green under the 2006 Commons Act. This was on the legal grounds that the people of Ramsbottom had enjoyed unrestricted access *for at least 20 years* to the Site prior to the fencing off in April 2011.

The owners Peel Holdings have objected. The issue will now go to a public enquiry. Peel object on the grounds that on this Application Site between 1991 and 2011:

- People have used only the 2 paths, and *not* the field itself.
- The steepness and overgrown state of the land would make leisure pursuits 'unlikely'.
- From 1991 to 2004, and back to 1977, every March to October, the field was grazed by as many as 12 horses and ponies at a time, and roped off in sections for this purpose.
- Signs, walls and fencing have been in place from 1977 to 2004. So, to gain access, 'force has been used by some users'.
- The 'locality or neighbourhood' using the field is not a recognisable, cohesive area.
- Our original 26 questionnaires do not represent 'a significant number of inhabitants'.
- 'It has always been Peel's intention to make an application for planning permission . . . for suitable development at the appropriate time' on Church Fields.

Do *you* have a view? Have you lived in Ramsbottom?

At the public enquiry, we need to present as many written responses as possible from locals who have used the Site:

- for any leisure or recreation
- for walking **regularly** along either of the two paths (one paved, the other unpaved)
- **and particularly in *any* of the years from 1991 to 2011.**

Please answer the accompanying questionnaire honestly and independently, sign and return it to any of the Collection Points in the town (notices in shop windows).

Use an extra sheet if you need to, but number your additions - eg 'Qn1 continued'. Please sign and date any extra sheet.



***Remains of the boundary,
Church Fields above Bar***

late 2013/2014 - *your* written evidence is crucial. Takes 5 mins!



Two views of the Application Site (Church Fields) from the same spot



*y wall between Bolton St and
wood Lodge House, July 2013*

Do you have friends, relatives (including children) or neighbours in Ramsbottom who could fill one in?

Take a few! But *please* pass them on.

Extra questionnaires can be downloaded from www.ramsbottomheritage.org.uk/churchfields.html

This may be Ramsbottom's last chance to save this field for future generations.

Historical evidence of the Commons status of Church Fields, 1806

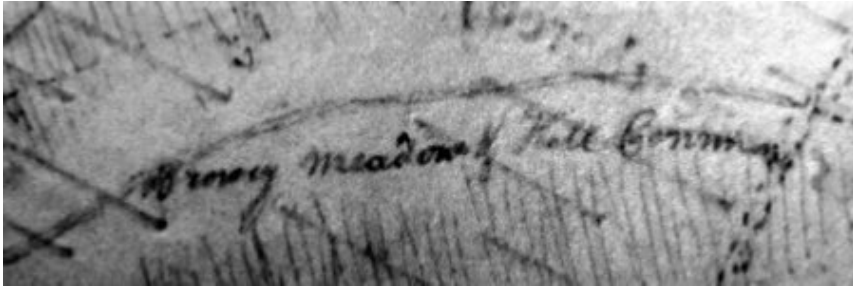
The earliest known plan of Ramsbottom is in the Bolton Archives, within the Albinson Collection. Catalogued as 'Rough Plan of Higher Ramsbottom Estate, the Property of Sir Robert Peel & Co dated 14 September 1806' (ZAL94), the survey was clearly completed in connection with the sale to William Grant of what is now Ramsbottom town centre and the land lying to the south west. It famously shows the layout of the Old Ground, and seems to have been used as the basis of the plan which appears on pages 111-2 of Hume Elliot's *The Country and Church of the Cheeryble Brothers* (1893). Below is the portion of the plan which centres on Church Fields, north at the top.



Bottom left is the crossroads of Bolton Street/Nuttall Lane/Bolton Road West/Dundee Lane. The building within the triangle of ground is the *Old Dun Horse*.

The line of Bolton Street, to be straightened by the Turnpike Trust in the 1810s, runs from there to the top of this extract from the 1806 plan. Branching off to the right is what is now Kay Brow with the lodge to the south. Barwood House is on Grants Lane, a little to the east. Note the River Irwell across the bottom right of the extract, with the trees of a much smaller Lumber Carr Wood on its western bank..

But of particular interest to us is the slanting line of writing right at the centre of this extract (see below). It reads 'Browey Meadow & Hall Common' and seems to be directly under the line of trackway which was to be paved in the early 1950s.



The name 'Browey' could be some local corruption of Barwood. (By 1842, when a much more detailed map was surveyed in connection with the Tithe Award, the whole of Church Fields, running down as far as what is now the railway, was called Barwood Meadow.) Alternatively, 'Browey' could be a vernacular reference to the hilly lie of the land at this point. Whilst there is no clear boundary to these two pieces of open ground, the name 'Hall Common' must allude to Nuttall Old Hall, which stood a few hundred yards to the south-east until the 1960s. This is the earliest indication we have that at least part of this land has been considered to be of Commons status.

Andrew Todd

REVEREND RICHARD CHEW AND HIS RAMSBOTTOM ROOTS

The pictures are reproduced from the *Memoir of Rev Richard Chew* by the Reverend Edward Boaden, published in 1896 and they show the local buildings which featured in Richard Chew's life in Ramsbottom. Born locally, probably in a cottage in the hamlet of Sheep Hey (Stubbins) on 2nd February 1827, Richard Chew was the third of five sons and there were also three daughters. His father was a block printer in Stubbins and Richard's first job was at a rope walk, working for an uncle. After his parents removed to Twelve Row, Stubbins Lane, Ramsbottom he worked at Ramsbottom Mill and later Rose Bank Printworks, Stubbins. Later in life, as Reverend Richard Chew, he rose to the eminent position of President of the United Methodist Free Churches. (Methodism, a non-conformist church community, had been divided for over a hundred years before 1932 when the Primitive Methodist

Church, the Wesleyan Methodist Church and the United Methodist Church - which had already incorporated the United Methodist Free Churches in 1907 - came together). As a child Richard Chew was sent to be taught at the Sunday School in the old New Jerusalem Swedenborgian Church on Ramsbottom Lane.

(In 1874-6 a new New Jerusalem Church was erected on the corner of Factory Street and Ramsbottom Lane, beside the original one. There are more details in Brenda Richards' article, "The History of the New Jerusalem Church in Ramsbottom" in News Magazine No 41 Autumn 2011. Fundraising to replace this second Church building began in 1913 but ceased during World War 1 and after the war costs seemed to have increased so much that the rebuilding was abandoned.



THE OLD NEW JERUSALEM CHURCH, RAMSBOTTOM.
(Mr. Chew's first Sunday School.)

In 1930s under Rev A Stones £4000 was raised and much repair work was done. In WW2 the building was used by the military. Later ministers included Rev W Allsopp, Rev Bryan Trobridge and Rev John O Booth. When their Church closed in 1970 some of the members joined the Haslingden Congregation. The Ramsbottom NJ church building was demolished in 1971/2. Although a "Swedenborgian Memorial Ground" was planned for the site, just a stone memorial at the top of Factory Street now marks its position.)

Around the time that Richard Chew was attending the Sunday School, Ramsbottom had three or four Sunday Schools where reading, writing and arithmetic formed part of the teaching, one or two dame schools open during weekdays and some night schools. Richard also attended evening classes at the old Wesleyan Chapel, Market Place, Ramsbottom.

When he moved with his parents to Twelve Row he was first connected with the Wesleyan Chapel. Disagreements, expulsions and withdrawals within the Methodist

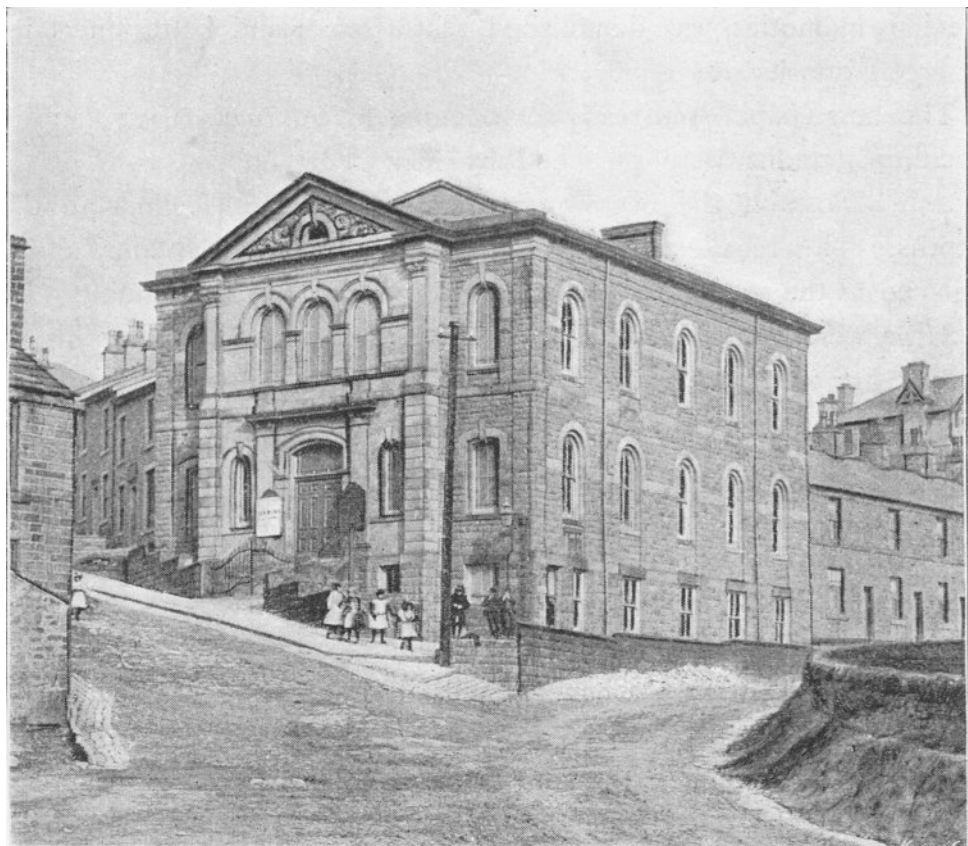


TWELVE ROW, RAMSBOTTOM.

Church were the order of the day and although he was not directly involved, he began his association with Patmos United Methodist Free Church which had been founded in 1836. It was situated on the corner of Bury New Road and Peel Brow.

As an active Christian, Richard Chew began his service teaching in the Sunday School. As well as conducting services in their chapel, the Patmos Christians held cottage meetings at which Richard Chew assisted, Lower Park Cottages being one of the first places at which he preached.

By 1846, he was popular and effective as a preacher in pulpits around the Bury circuit and much further afield. The old Patmos Chapel, associated with Richard Chew's childhood and youth was demolished to be replaced with a new building in 1874. Richard Chew preached the sermons at the first service there.



* Ramsbottom's original Wesleyan Methodist Chapel, which had been built in 1825, was the town's first Nonconformist chapel. The present building replaced the 1825 Chapel on the same site in 1874. It eventually became Christ Church



Methodist/Baptist Church in 1972 after Ramsbottom Baptist Chapel, Bolton Street, which had been erected in 1861, was forced to close because of serious problems with the roof. The Baptist Chapel has been converted into flats.

Meanwhile in the 1950s, dry rot and problems with the foundations at Patmos meant that a great amount would need to be spent for worship there to continue. A new Patmos Methodist Church was planned for Fir Street, Ramsbottom, but found to be beyond the means of the congregation. Patmos and Market Place Methodist Churches decided to work more closely together. Sunday worship was held at Market Place and at least for some time, Patmos was used for Sunday School and youth work. A service to celebrate the official union of the two congregations was

held at Market Place Methodist Church on 17th May 1958. A transcription of the Patmos baptism registers March 1870 to January 1956 (with index) is available at Ramsbottom Library (Local Collection – reference only) and Bury RIF Library.

In its turn, with dry rot in its roof beams extending into the walls, Christ Church Methodist/Baptist Church, Market Place, Ramsbottom closed in 1996 and was converted into the Adderstone Mansions apartments. A new Christ Church on Great Eaves Road, off Stubbins Lane was officially opened at a service on 8th January 2000.

Sources - Bury Times 3 May 1958, 1 Nov 1958; 12 Sept 1970; 27 Feb 1971
Rossendale Free Press 27 Feb 1971

Ramsbottom War News

NEWS

**This year's proceeds totalling £1075 have been donated
to RAMSBOTTOM'S WAR MEMORIAL WALL
PROJECT**

More information on www.ramsbottommemorialwallproject.co.uk

War News issues 1 to 4 have been published every May from 2010-13
by the Society, using information from editions of
The Ramsbottom Observer and our archives.

They have been our most popular publications ever.

COPIES ARE STILL AVAILABLE ~ STILL ONLY £1
ISSUE 5 ON SALE FROM MAY 2014

Ramsbottom Heritage Society's Photograph Competition

The annual photographic competition is now open until the 31st January 2014. Entries must have been taken in 2013 in the Ramsbottom area, and are retained by the Society as a record of the year. Therefore, photographs of buildings that are changing, or unique events, are of particular interest. There are 4 categories, Town and Country, Buildings, Events and Daily Life, and Themes. The photographs will be stored on the photograph database on the website, which has 2400 photographs from the 26 years that the competition has been running, and also has 1700 older photographs from our collection which is held at Bury Archives.

This year, digital entries only can be accepted. They can either be emailed to john@ramsbottomheritage.org.uk, submitted via an online Photograph Competition Form or handed in on a memory stick or CD at one of the monthly meetings. All the details are on the Society's website, www.ramsbottomheritage.org.uk.

The winner, who will hold the Dickensian Trophy for a year, will be announced at the meeting on Wednesday March 19th 2014.

TONY MURPHY by Linda de Ruijter

My recollections of Tony are mainly personal. When our Chairman, Dorothy Moss said she was going to retire at the AGM 2004 I thought long and hard about who could succeed her. Not an easy task for anyone to follow in Dorothy's footsteps. Even though Tony was a member of the Society he hadn't taken any real active role. I can't imagine what went through his mind when I first suggested to him that he would be the ideal candidate to take over from Dorothy!

Perhaps it was due to my special powers of persuasion Those of you around at the time may remember that a group of us enjoyed holidays and outings together when we became very close friends. Tony was fun to be with. He and Joan loved life. Saying they were "Game for anything" maybe creates the wrong impression. But they gave much of themselves to whoever they were with. Their caravan was their hideaway, a place where they could relax and enjoy the Cockermouth area that they both loved so much. Back to the leadership issue. I kept up the pressure on Tony and finally he relented and became Chairman. Tony's years in charge saw many changes the closure of our old and dear Heritage Centre, the search for a new base was exhausting and protracted. Tony's commitment to the Society was boundless. He coped admirably with each challenge.

He was a loyal and steadfast friend. Courageous to the end.

OBITUARY - TONY MURPHY

Tony was born in Miles Platting, Manchester and as a child he attended Our Lady of Grace R.C. Primary School, Prestwich. His career in engineering began with an apprenticeship in the fitting shop at the Gorton Locomotive Works of Beyer Peacock & Co Ltd. One day in 1954 the apprentices helped to pull out from the sheds a thirty four ton 1909 Tasmanian Government Railways K1 locomotive which had been shipped back to Gorton in 1947. The apprentices cleaned it and made it ready for the 100th anniversary celebrations of the company. A lifelong passion for trains followed his time at the Works with Tony travelling all over the country by rail and, incidentally, being pleased to note the progress of the K1 as it was sold to the Ffestiniog Railway in 1966, cosmetically restored at the National Railway Museum for exhibition and returned in 1995 to the Ffestiniog who eventually brought it back into service on the Welsh Highland Railway. During his National Service Tony had been sent to Bahrain. Later he worked for various shipping companies in Manchester and gained a degree in shipping. His career's transport theme continued with British Aerospace at Salmesbury, Lancashire. Tony married Joan in 1973 at Prestwich and they moved to Ramsbottom in 1986. In November this year they would have been married for forty years and, struggling bravely with illness recently, he suggested to Joan that the celebration should be brought forward.. A regular and committed member of St Joseph's Parish Church he was always willing to help. He became the Church's representative for the overseas aid agency CAFOD, promoting fundraising at Lent and harvest time and also assisted with clerical work every Wednesday at CAFOD's office in Salford. He was a Reader at Mass and was proud to become an 'Altar Boy' aged sixty nine! That he was well loved and respected was made apparent by the full church of mourners at his Requiem Mass. As well as serving with distinction the Ramsbottom Heritage Society, Tony was a valued member of Edenfield Local History Society and held office, including that of chairman, on their committee. Jackie MacDonald paid this tribute

Tony was a long standing member of Edenfield History Society and was chairman from 2004 to 2008. In 2008 he took on the position of programme secretary, organising varied meetings and outside visits and sending very informative reports to the local press. He was so dedicated that despite serious illness he continued to make arrangements for the 2013/14 programme. He particularly enjoyed a good slice of cake (or two) at our committee meetings and contributed enthusiastically to our Christmas parties with his humorous readings. We will miss him very much.

(NB News Magazine No 27, dated Winter 2004 (available to read at Ramsbottom Library) features an introduction to Tony who had just become the third Ramsbottom Heritage Society Chairman. The article, by Andrew Todd, is in the form of a fascinating and detailed "Society Sketch".)

LOCAL RESEARCH

The Heritage Society cannot offer a research service. The following could be approached:

Bury Archives, Moss Street, Bury, BL9 0DG email contact: archives@bury.gov.uk or tel: **0161 253 6782**

Opening Hours Please note that the Archives are closed each day between 1pm and 2pm and that the latest time to produce records is 4.30pm (weekdays):

Tuesday	10am - 5pm	2nd Saturday of the month 10am –
Wednesday	10am - 5pm	4.30pm
Thursday	10am - 5pm	
Friday	10am - 5pm	

Visitors are free to use finding aids, online archives resources or to speak to a member of staff but are advised to make an appointment if they wish to consult archive documents.

Collections held include records relating to local authorities, public bodies, schools, churches, businesses, trade unions, political parties, sports clubs, social organisations, family papers, deeds, maps and plans and indexes to local parish registers including Ramsbottom. Our catalogues are online at <http://archives.bury.gov.uk> as 'Bury Archives Catalogue'. The Archive photograph collection can be browsed on the Bury Image Bank website at www.buryimagebank.org.uk. We run an enquiry service, offering 15 minutes staff time free. The Ramsbottom Heritage Society's Collection, including photographs, is on permanent loan to Bury Archives.

Bury Local & Family History Service, Moss Street, Bury, BL9 0DR: information@bury.gov.uk or tel **0161 253 5871** has publications on local history, historical printed works of local interest such as trade directories, older OS maps for the whole of Bury MBC (including Ramsbottom), microfilmed copies of local newspapers, thematic collections of news cuttings worth pursuing for local biographies, census returns and parish registers (microfilm). Indexes for local church registers, including Ramsbottom are also held. A direct link to Bury Libraries catalogue (which lists local history items held in all the borough's libraries) is at <http://library.bury.gov.uk> - follow 'Bury Libraries Catalogue (Local Studies)'. Free access to the *Ancestry* and *Find my Past* databases is available in all Bury Council's libraries. Please phone for details of other family history advice services.

Lancashire Family History and Heraldry Society; membership secretary Stephen Benson, 32, Slater Lane, Leyland, PR25 1TN, email: membership@lfhhs.org.uk. Membership entitles you to 4 magazine issues, an opportunity to publish your research queries and findings, and meetings each month with speakers at venues all over the county, including Bury and Rawtenstall. Also one branch in London. More information is available on www.lfhhs.org.uk.

Ramsbottom Library and Adult Learning Centre, Carr Street BL0 9AE
tel **0161 253 5352** (IT - tel **0161 253 5354**) email: Ramsbottom.lib@bury.gov.uk

The library boasts an IT suite, with a visually impaired and disabled friendly workstation, back copies of the *Ramsbottom Observer* 1890-1950 on film and a microfiche reader. Much of the Ramsbottom local collection of the late Rev R R Carmyllie, local census returns and several filing drawers of local news cuttings and booklets and Hume Elliot's history are also available. Family history help sessions are held on the 3rd Monday of the month 1pm to 5pm and advice is available at other times by appointment.

Ramsbottom Heritage Gallery

Our exhibition in the Gallery, upstairs at
Ramsbottom Library and Adult Learning Centre.

Open to the public until May 2014:

Regal Ramsbottom

Nine Monarchs and Seven Coronations

Including:

- An amazing collection of Coronation memorabilia and photographs going back to Queen Victoria's reign
- A map of Ramsbottom Market Place, dating buildings erected in the reigns of kings George III and George IV and Queen Victoria
- If you have memories of Coronation celebrations in Ramsbottom, come to the Gallery and tell us about them or phone 01706 28 1998.

Location:

Ramsbottom Library and Adult Learning Centre, Carr Street,
Ramsbottom, BLO 9AE. Tel: 0161 253 5352

Opening Times:

Monday, Tuesday, Thursday and Friday from 9.30am – 7.30pm

Saturday from 9.30am – 1pm

2nd Sunday in the month 12 noon - 3pm (side entrance)

Ramsbottom Heritage Society:

www.ramsbottomheritage.org.uk

